

ALUMERO

AS 2.1
**BEAVERTAIL
REPLACEMENT
BOARD**

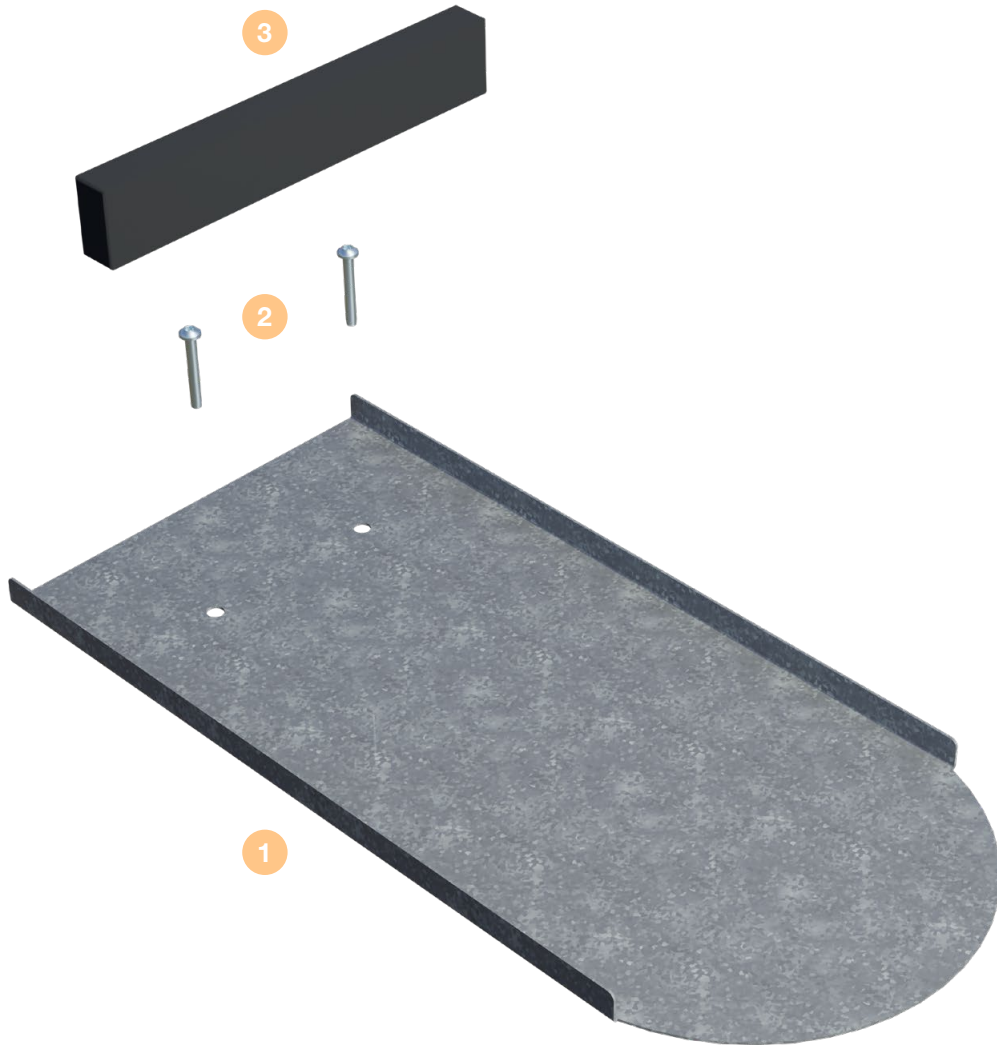
EN

INSTALLATION INSTRUCTIONS

COMPONENTS

STANDARD

- 1 Beavertail Replacement Board AS 2.1
- 2 Plate-head screws TX20 4 x 30mm
- 3 Compressible tape 15x30x180 mm



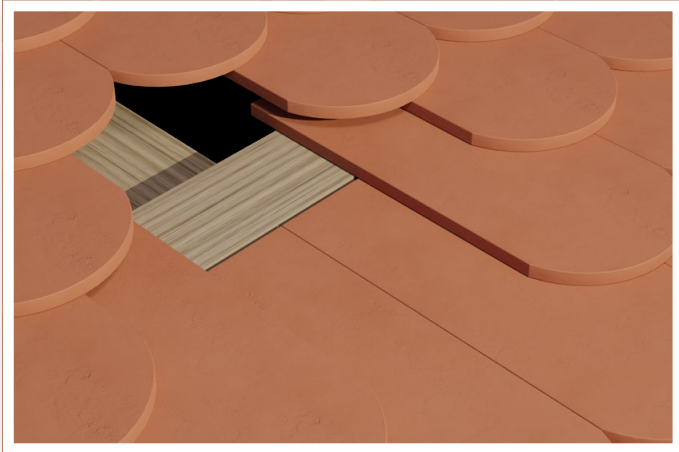
TOOLS REQUIRED



Screwdriver
with bit set:
Torx **TX20**

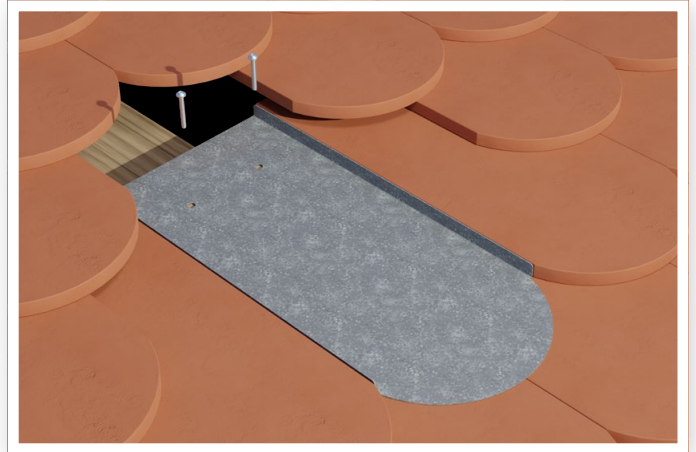
INSTALLATION

1



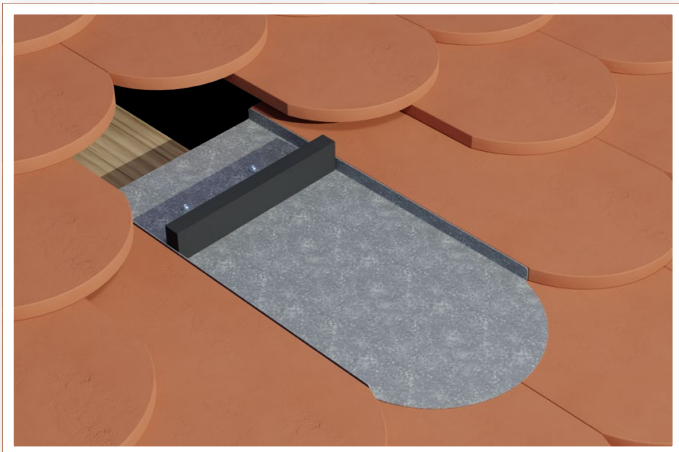
Create an opening.

2



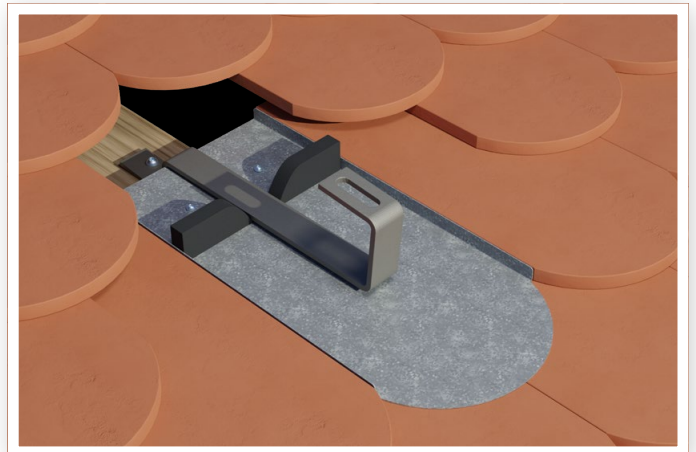
Bring the Beavertail Replacement Board into position and screw it tight.

3



Apply compression tape just below the screws.

4



Fit roof hooks as described in the document „Mounting instructions AS2.1 Tiled roof.“

5



Put the Beavertail Replacement Board back into position.

ALUMERO

**CONGRATULATIONS,
WELL DONE!**

CONTACT HEADQUARTER

ALUMERO Systematic Solutions GmbH
Sonnenweg 1-2
5162 Seeham - Österreich

T +436217 / 68 41 - 0
F +436217 / 68 41 - 41
solar@alumero.at
www.alumero.at

Components are to be used appropriately. The compatibility of the assembly materials used must be observed! ALUMERO Systematic Solutions GmbH is not liable for damage caused by improper installation and/or improper handling, or for damage caused by non-compliance with applicable standards or legal regulations. We reserve the right to make technical changes.